

**IMPACT**

**DONORS**

**FINANCIAL  
SUMMARY**

# **ANNUAL REPORT**

**2025**

**PROGRAMS**

**NUMMER OF  
PEOPLE REACHED**

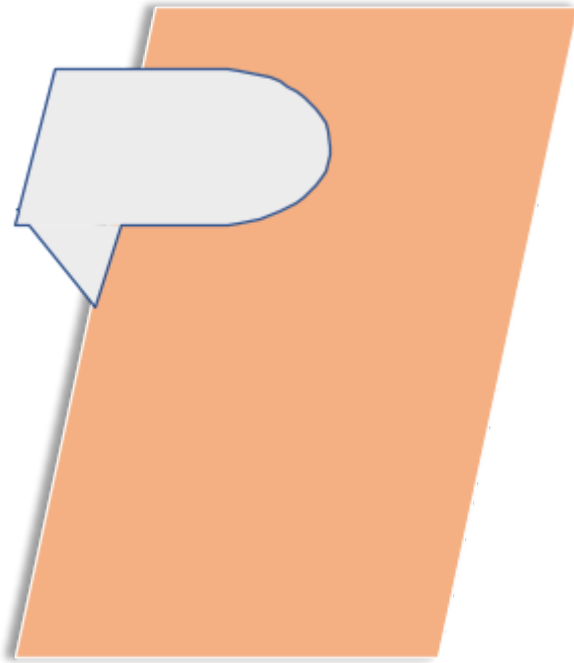
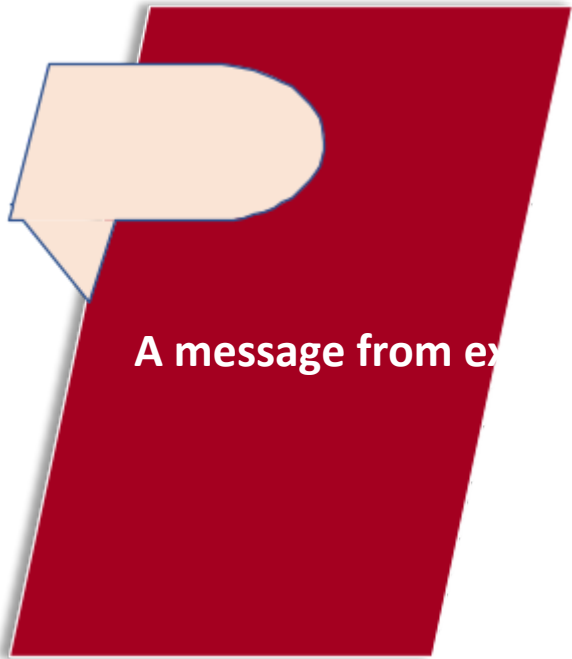
**PARTNERS**

...technology! The Kiserem Center is helping young people with essential pro...  
...solving...ation.

**Participants engage in hands-on workshops, project building, mentorship, and tech competitions, learning languages like Python, Scratch, and HTML/CSS. The coding class has more than 50 students who actively participated in the learning sessions.**

**By joining the program, youth gain career-ready skills, confidence, and opportunities in the tech world, while contributing to community-driven digital solutions.**

**Learn. Create. Innovate. Transform.**



Who we

1

2 are

5

The  
context



6

Years review



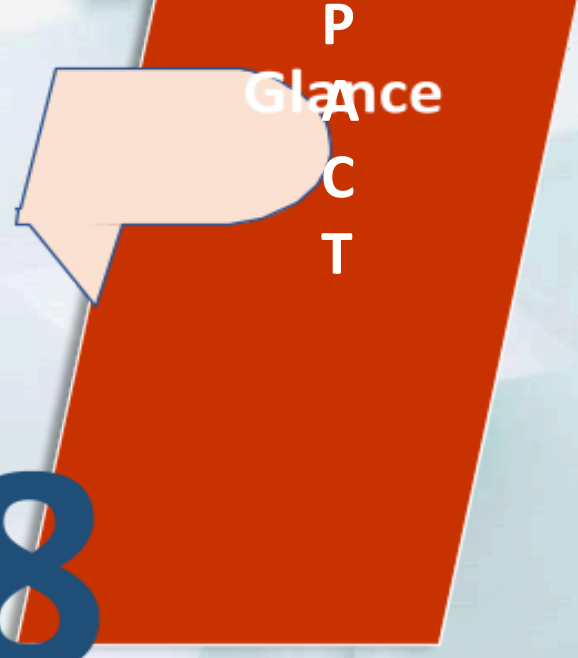
3

Our  
Our  
programs  
core  
value

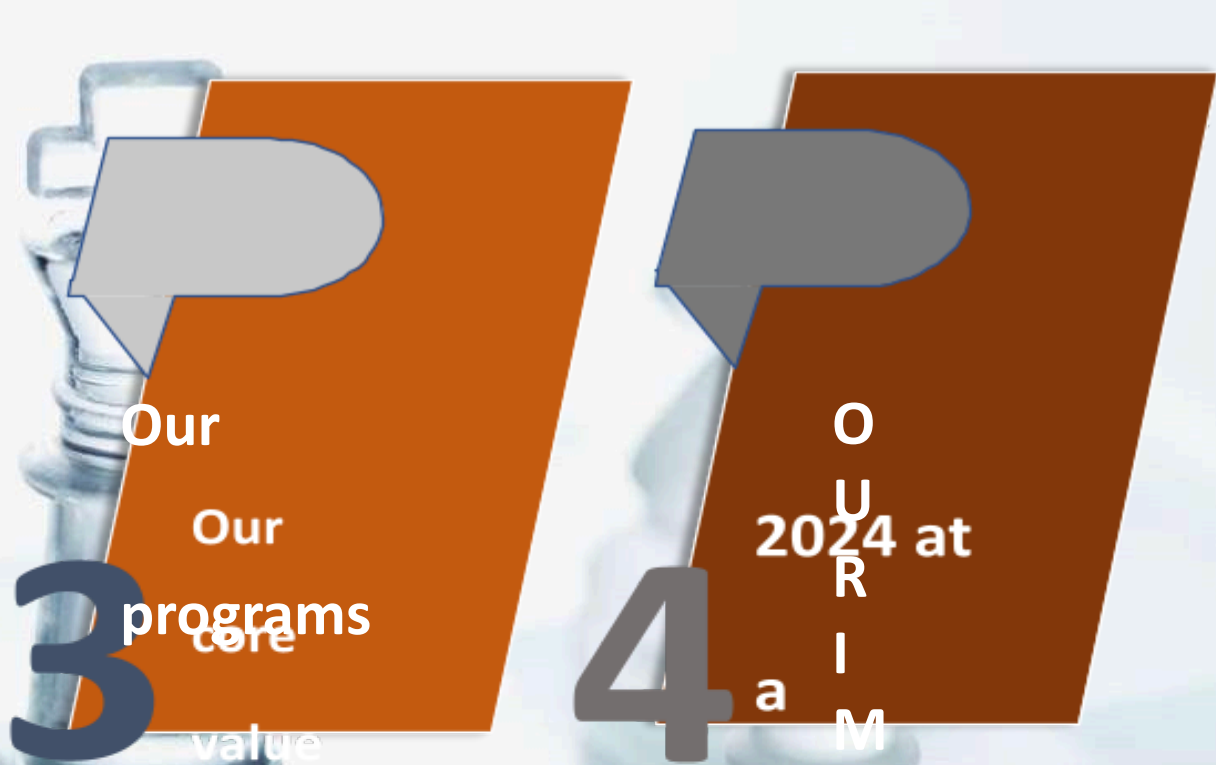


4

O  
U  
R  
I  
M  
P  
G  
l  
a  
n  
c  
e  
C  
T



8



# A MESSAGE FROM THE DIRECTOR

Dear Friends,

The year 2025 was truly a remarkable and transformative period for the Kiserem Epilepsy Foundation. It marked the beginning of a new chapter in our journey, as we started implementing our growth strategy in earnest and expanded our focus to include medical camps—bringing essential

This year, the Kiserem Foundation made significant progress in supporting people living with epilepsy through medical outreach. One of their key activities was a major free epilepsy medical camp held in Mvihoko, Kiambu County. During this event, community members received free diagnosis, medication, and health education. The camp also offered additional services such as blood pressure and blood sugar screening to ensure holistic care for attendees.

The foundation also strengthened its efforts to reduce stigma surrounding epilepsy. Through the *Epilepsy Education and Empowerment* project, they engaged communities in awareness sessions aimed at correcting myths and promoting understanding. These campaigns helped increase acceptance and support for people living with epilepsy, especially in rural and underserved areas.

In addition to awareness, the Kiserem Foundation expanded its empowerment programs to promote independence among people with epilepsy. They offered vocational and employability training, equipping individuals with practical skills that help them find employment or start small businesses. This approach

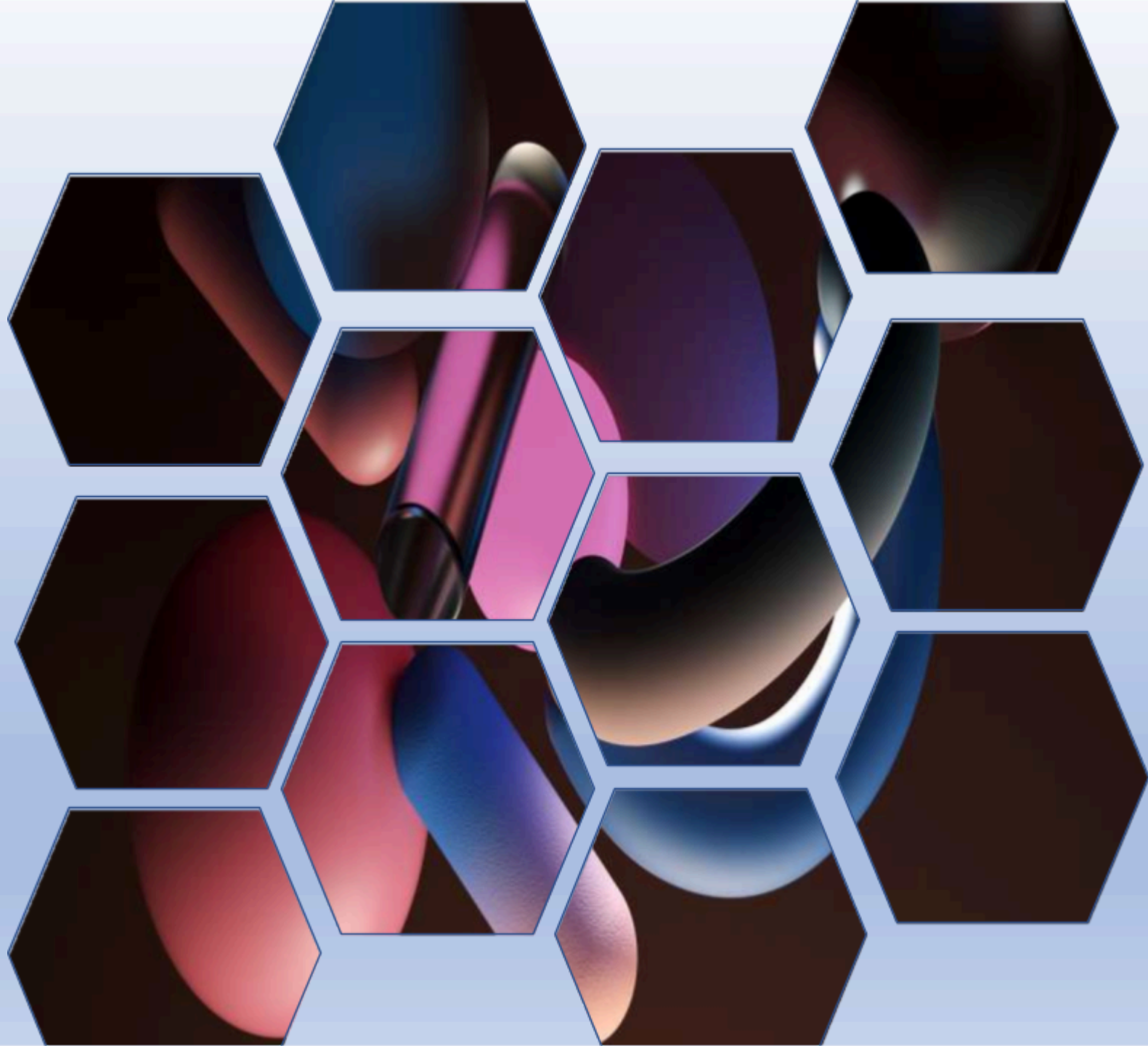


**ensured that beneficiaries not only received health support but also opportunities to improve their livelihoods.**

**The foundation's impact was further recognized internationally when the founder, Fred Kiserem, received the prestigious Amanda 2025 Award. This award highlighted the organization's dedication to advocacy,**

# WHO WE ARE

The Kiserem Epilepsy Foundation is a community-driven organization dedicated to improving the lives of children, youth, and families living with epilepsy across Kenya through education, health, technology, and social empowerment. Founded on the belief that every person deserves equal opportunities, we work to break barriers, reduce stigma, and build inclusive communities where everyone can thrive.



Kiserem Foundation envisions a community where people with epilepsy are fully understood and supported. It aims to reduce stigma and ensure that everyone affected can access proper care. The goal is to help individuals with epilepsy live healthy, dignified, and empowered lives.



The mission of Kiserem Foundation is to raise awareness and educate communities about epilepsy. It works to support patients through access to medication, healthcare services, and counselling. The foundation also empowers individuals with skills training and advocacy to promote independence and inclusion in society.



Kiserem Foundation is guided by values of compassion, integrity, and empowerment, ensuring that every individual is treated with respect and dignity. The organization embraces inclusivity and works to provide equal opportunities for all, fostering self-reliance and growth. Committed to excellence and community-centered service, Kiserem strives to create meaningful and sustainable impact in the communities it serves



**2025**



Clients Reached Directly  
**10,000**



Total Number Of Staff  
**4**



Total Funds Invested  
**30,000,000**



Number Of People  
Benefitted  
**200,000**

# YEARLY REVIEW POPULATION COVERAGE



## **BARRIERS TO EPILEPSY TREATMENT IN KENYA**

Epilepsy affects 50+ million people globally, In Kenya 1-2 in 100 have epilepsy Approximately 1,000,000 people in Kenya have epilepsy, which is about 2% of the population

Studies in Kenya have shown people with epilepsy are six times more likely to die compared to general population (Ngugi et al } Limited knowledge contributes to harmful practices, patients abandoning medication, and exclusion from community life. Addressing these challenges requires a comprehensive, multi-stakeholder training program that equips healthcare providers, CHPs, traditional healers, and pastors with the knowledge and skills needed to ensure timely access to treatment, reduce stigma, and strengthen referral systems.



# *Our program*



Coding  
program



Sponsorship



**Beauty program**

**Awareness  
program**

**Medical  
camps**

# CODING PROGRAM

Empowering youth through technology! The Kiserem Coding Program equips young people with **essential programming and digital skills**, fostering **creativity, problem-solving, and innovation**. Participants engage in **hands-on workshops, project building, mentorship, and tech competitions**, learning languages like **Python, Scratch, and HTML/CSS**. The coding class has more than 50 students who actively participated in the learning sessions.

By joining the program, youth gain **career-ready skills, confidence, and opportunities in the tech world**, while contributing to **community-driven digital solutions**.  
**Learn. Create. Innovate. Transform.**



# SPONSORSHIP PROGRAM

The Kiserem Epilepsy Foundation, in partnership with **Metha ya Kagoni**, runs a sponsorship program that supports vulnerable but bright children to access education and skills development. The program pays for full school fees and provides basic necessities required while in school. **The sponsored students are enrolled in national schools as well as extra-county, county, and sub-county high schools**, ensuring equal opportunities across different education levels. **Currently, over 100 students are fully sponsored through this program**, enabling them to focus on their studies and build a better future



# MEDICAL CAMPS

The **Kiserem Epilepsy Foundation**, in partnership with **Spirit in Action**, organizes free medical camps in Kiserem/Mwihoko that provide essential services including neurological assessments, EEG testing, distribution of anti-epileptic medication, and comprehensive general health checks — such as blood pressure screening, diabetes testing, HIV testing, and **basic eye treatment and examinations**.



# BEAUTY PROGRAM

The **beauty program at Kiserem Foundation** provides hands-on training in beauty and personal care skills, equipping students with practical knowledge, confidence, and professional readiness to work in salons or start their own businesses. **Since the program started, over 300 students in the beauty program at Kiserem Foundation have secured stable jobs**, demonstrating the program's strong impact on skills development, employment, and economic empowerment within the community

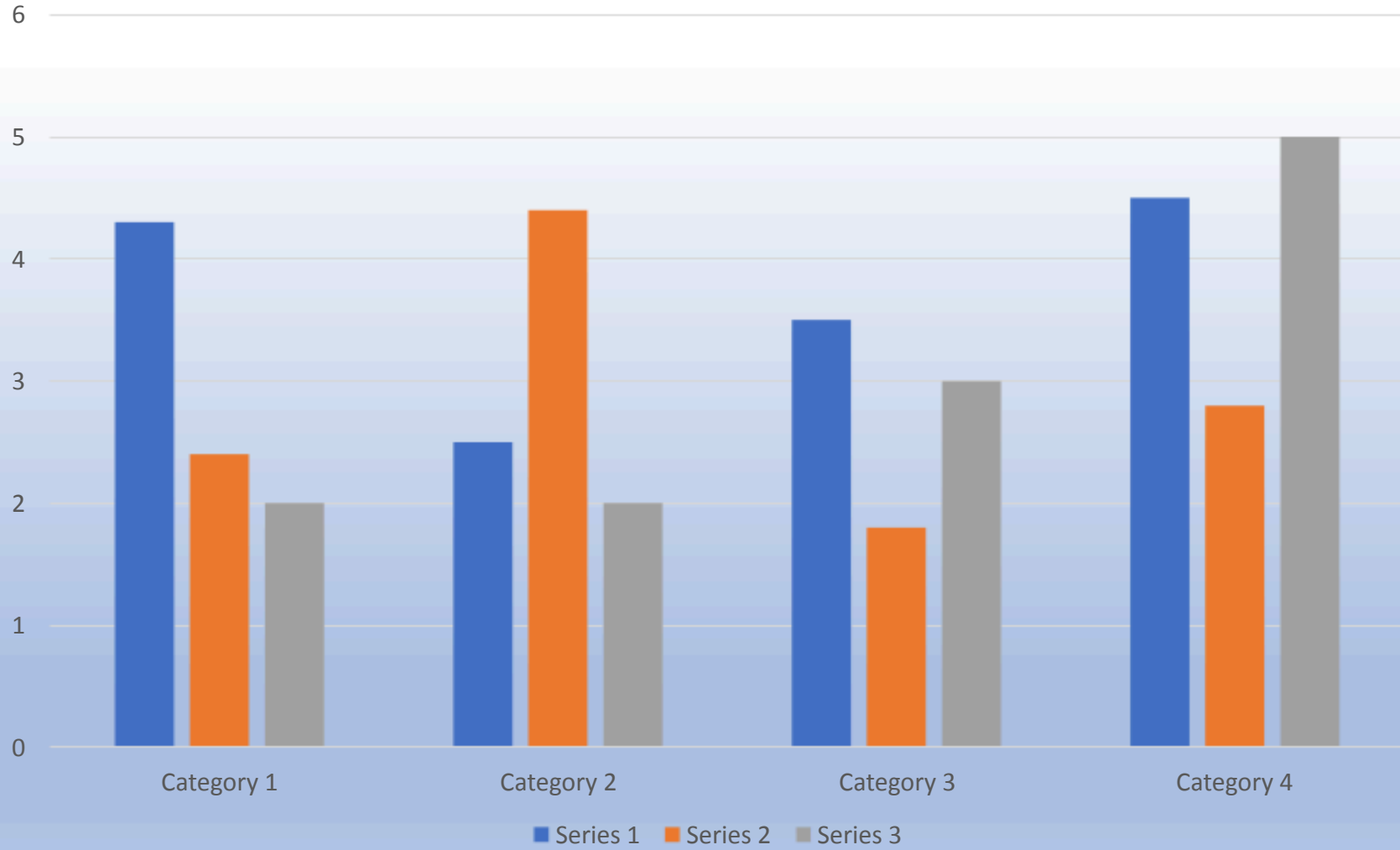


# AWARENESS PROGRAM

**The Kiserem Epilepsy Foundation runs an awareness program focused on educating communities about epilepsy, its causes, treatment, and proper first aid during seizures. Through seminars, school visits, church outreach, community forums, and media campaigns, the foundation works to correct myths and reduce stigma associated with epilepsy. They engage local leaders and health workers to spread accurate information, while also offering guidance and counselling to affected families through home visits and support sessions. Their awareness efforts aim to promote understanding, encourage medical treatment, and create an inclusive environment for people living with epilepsy**



# Chart Title



# Awareness Campaigns

1M

Kenyans Reached

Through school outreach, church forums, radio like radio citizen and even citizen tv.



Local Language Impact

Messaging in K iswahili and local dialects tripled engagement in rural counties.



Reduced Diagnosis Delay

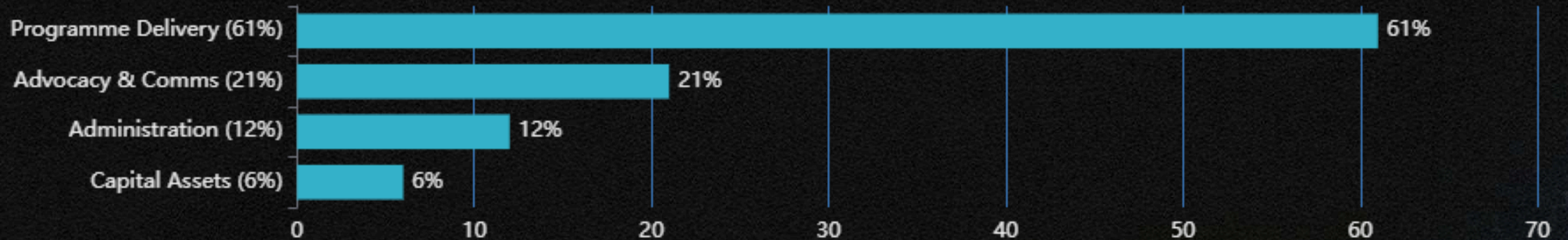
Awareness efforts reduced diagnosis delay by an

4 months

average of

# Expenditure Focus

Of the **KES 26.9 million** spent, the majority was directed towards direct programme delivery, with cost-per-beneficiary dropping 14%.



# Foundation partners





## Governance

### **6-Member Board**

Comprised of clinicians, legal, and finance experts providing quarterly oversight, ensuring compliance and risk management.



## Volunteer Network

### **10 Volunteers**

Contributing **9,400 hours**, enabling us to stretch resources while embedding local ownership.

# 2026 Strategic Priorities

Mobile Clinic Launch

Reach six underserved counties with essential epilepsy care services.

Building resource center

Provide holistic support for patients and their families .

Expanding beauty program

Empower young people with epilepsy to achieve economic independence.

## Expanding coding program.

Advocate for National Health Insurance Fund coverage of anti-seizure medication.

## ● Expanding coding program

Advocate for National Health Insurance Fund coverage of anti-seizure medication.

A group of young students, likely from a school, are sitting at desks in a classroom or computer lab. They are focused on their laptops, with some pointing at the screens and others typing. The students are wearing school uniforms. The scene is brightly lit, suggesting an indoor setting with large windows. The overall atmosphere is one of concentration and learning.

# **CODING EVENT**

The coding event in Westlands brought together students and tech enthusiasts to explore various aspects of programming and innovation. Participants showcased projects in web development, robotics, and AI, demonstrating creativity and problem-solving skills. The event also included sessions on UI/UX design, allowing attendees to learn practical skills for building user-friendly applications. Organized by Code Yetu, the event provided a platform for networking, learning, and inspiring the next generation of tech innovators

# GRADUATION

Graduation in the **beauty program at Kiserem Foundation** marks the successful completion of hands-on training in beauty and personal care skills. The program equips students with practical knowledge, confidence, and professional readiness to work in salons or start their own businesses. **Since the program started, 300 students in the beauty program at Kiserem Foundation have graduated and secured stable jobs**, showing the program's strong impact on skills development, employment, and economic empowerment within the community.



# Join Our Mission

Join us to bridge the treatment gap. Together we can turn epilepsy from a shadowed condition into a manageable chapter in every Kenyan's life journey.



Sponsor a clinic day



Volunteer your expertise



Donate medicines



Amplify our awareness messages



**The Kiserem Epilepsy Foundation collaborates with the International League Against Epilepsy (ILAE) to strengthen epilepsy awareness, advocacy, and support programs. This collaboration enhances access to accurate information, capacity building, and best practices in epilepsy care, contributing to improved understanding and quality of life for people living with epilepsy within the community**

# ILAE ACHIEVEMENTS 2021-2025

## EXPANDING OUR LEARNING OPPORTUNITIES

The ILAE has made significant progress to expand the range and types of learning opportunities available worldwide.

### IN-PERSON EDUCATION

A large number of in-person courses are supported by our regional academies ASEPA and ALADE and through other ILAE regional board educational initiatives.

Residential ILAE Schools are open to students from across the world and provide focused learning on specific curricular topics as well as the opportunity to engage with experts and build peer-to-peer networks.

ILAE has also invested in developing teachers and trainers through cascade 'train the trainer' programs such as PET (Paediatric Epilepsy Training), in collaboration with the BPNM and ETAM (Epilepsy Training in Adult Medicine) as well as visiting professor and surgical mentor programs.

Hands-on learning opportunities are available through regional clinical training visits and level 2 and 3 fellowships as well as more research-focused laboratory and research fellowships.

### ONLINE EDUCATION

The ILAE Global Academy provides competency based online learning modules across seven different domains and allows learners to build their knowledge from an introductory level to a specialized, proficiency level.

A variety of online tutored courses such as VIREPA and ALADE are also available as stand-alone courses or to complement the self-paced learning through the Academy.

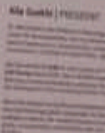
## CLOSING TREATMENT, RESEARCH AND INCLUSION GAPS

### ACTION PLAN

Commitment of all members of the ILAE International League Against Epilepsy and other related organizations to support the development and implementation of the action plan.

Goals and objectives of the action plan to improve the lives of people with epilepsy and their families and communities.

### ILAE Executive Committee INCOMING 2025-29



ILAE unites a global community with epilepsy and their caregivers through its expansive network of chapters.

### Our Vision

A transformational social change for people with epilepsy worldwide.

### Our Objectives

- Positioning epilepsy as a global health priority
- Empowering and amplifying the voices of people with epilepsy
- Serving and supporting our communities

### Our Action Areas

- Advocacy and awareness-raising
- Capacity building
- Knowledge creation and exchange
- Partnership development

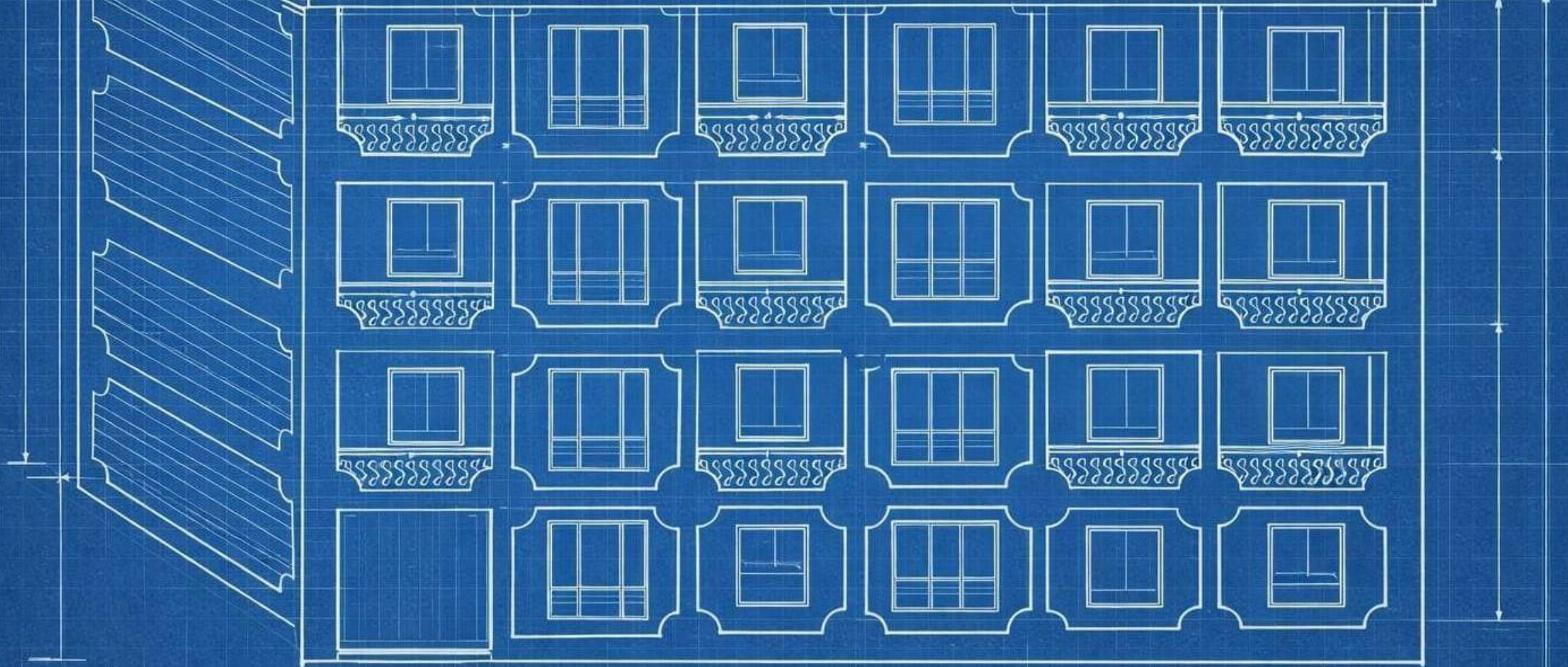
Connect With Us!  
info@ibe-epilepsy.org  
internationalleagueagainstepilepsy.org

## **2026 PROPOSED RESOURCE CENTER**

The blueprint below represents the future development plan of the Kiserem Resource Centre Foundation, envisioned as a multi-purpose facility that will enhance community well-being, education, and economic empowerment. Once implemented, the centre will provide essential services through a clinic, computer room, bakery, beauty training space, reading and workshop area, and a carpentry workshop, all arranged for efficient access and functionality. The planned sanitary facilities, main entrance, and organized parking area will support safe and convenient use of the centre. Overall, the project is intended to become a sustainable hub for skills training, healthcare access, and income-generating activities, contributing to long-term community development.

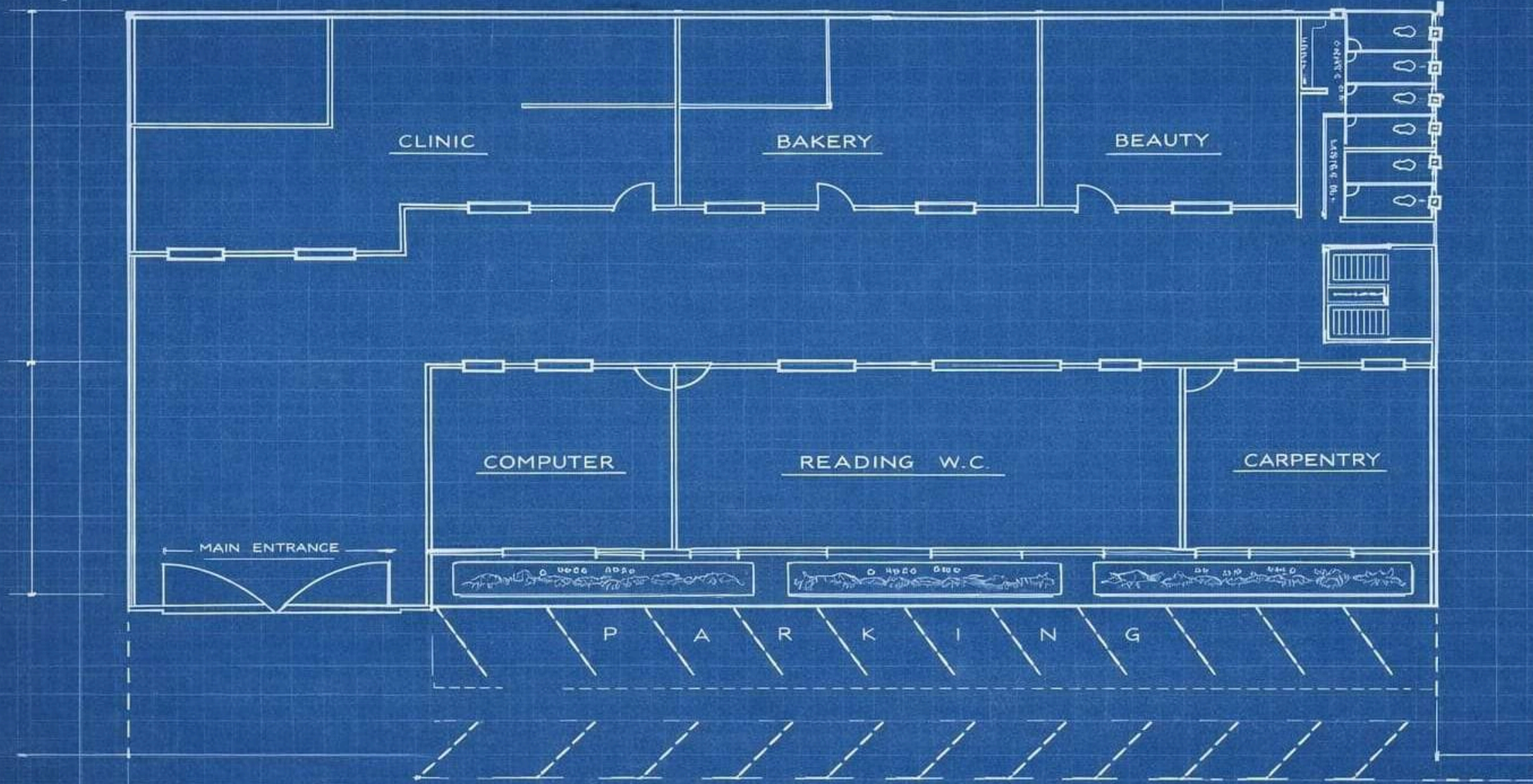


# KISEREM RESOURCE CENTRE FOUNDATION



BLUEPRINT

PLAN G.F  
KISEREM RESOURCE CENTRE FOUNDATION



BLUEPRINT  
GROUND FLOOR PLAN